

Red House® Ladies Pinpoint Oxford Non-Iron Shirt. RH250



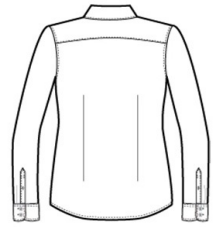
Crafted from 3.8-ounce, 100% cotton, this elegant pinpoint oxford has a wrinkle-resistant finish so you always look your best-no iron required. Details like taped seams, adjustable cuffs, button-through sleeve plackets, RH engraved buttons and a shirttail hem complement the sharp look. Open collar, front and back darts and a gently rounded hem.

CARE INSTRUCTIONS

Machine wash warm with like colors, only non-chlorine bleach if needed, tumble dry low, remove promptly & hang, warm iron if needed.



front



back

HOW TO MEASURE



BUST

With arms down at sides, measure around the upper body, under arms and around the fullest part of the bust.

SIZE CHART

	XS	S	M	L	XL	XXL	3XL	4XL
Size	2	4/6	8/10	12/14	16/18	20/22	24/26	28/30
Bust	32-34	35-36	37-38	39-41	42-44	45-47	48-51	52-55

COLOR INFORMATION



Blue
PMS 2134C



Charcoal
PMS COOL GREY
11C



Vintage Navy
PMS 2374C



White
PMS WHITE